

Marble Saw Blade Segment Boreway

Image:

## Marble Saw Blade Segment



Marble saw blade segments are used for cutting marble. They are made of a hard material and are designed to cut through the marble. The segments are arranged in a row and are used to cut through the marble. The segments are made of a hard material and are designed to cut through the marble. The segments are arranged in a row and are used to cut through the marble.

Image:

1. The segments are made of a hard material and are designed to cut through the marble.
2. The segments are arranged in a row and are used to cut through the marble.
3. The segments are made of a hard material and are designed to cut through the marble.
4. The segments are arranged in a row and are used to cut through the marble.

Image:

Marble saw blade segments are used for cutting marble. They are made of a hard material and are designed to cut through the marble. The segments are arranged in a row and are used to cut through the marble.

Image		Image		Image		Image		Image		Image		Image		Image	
100	2500	9.0 (10.0)	140	24	12.5	13/15	100/120	400							

Marble saw blade segments are used for cutting marble. They are made of a hard material and are designed to cut through the marble. The segments are arranged in a row and are used to cut through the marble.

1000000 = 1000000 1000000 = 1000000000000 100000 = 100000 10 100000 = 100000

Diameter		Thickness	Teeth	Segment Size			Hole	Max. RPM	Cutting Stone
Inch	mm	mm	pcs/set	L	W	H	mm	RPM	#
10"	250	18(2.2)	18	40	3.2	8/10	50/60	3850	Marble
12"	300	1.8(2.2)	22	40	3.2	10/12	50/60	3150	Marble
14"	350	2.2(2.4)	25	40	3.2	10/12	50/60	2750	Marble
16"	400	2.6(2.8)	29	40	3.6	10/12	50/60	2400	Marble
18"	450	2.8(3.0)	32	40	4.0(4.2)	10/12	50/60	2150	Marble
20"	500	2.8(3.0)	36	40	4.0(4.2)	10/12	50/60	1900	Marble
24"	600	36(3.2)	42	40	4.6(4.8)	10/12	50/60	1600	Marble
32"	800	4.2(4.5)	57	40	5.5(6.0)	10/12	50/60	1200	Marble
36"	900	5.0(5.5)	64	40	7.5(8.0)	10/12	60/80	1050	Marble
36"	900	5.0(5.5)	64	24	7.5(8.0)	10/13	60/80	1050	Marble
40"	1000	5.0(5.5)	70	24	7.5(8.0)	10/13	80/100	950	Marble
48"	1200	5.5(6.0)	80	24	7.5(8.0)	10/13	80/100	950	Marble
56"	1400	6.0(6.5)	92	24	8.5(9.2)	10/13	80/100	700	Marble
64"	1600	6.5(7.2)	108	24	9.2(9.5)	10/13	80/100	600	Marble
72"	1800	7.2(8.0)	120 I	24	10.0	10/13	80/100	550	Marble
80"	2000	8.0(9.0)	128	24	11.0	10/13	100/120	500	Marble
86"	2200	8.0(9.0)	132	24	11.0	10/13	100/120	450	Marble
100"	2500	9.0(10.0)	140	24	12.5	13/15	100/120	400	Marble
120"	3000	9.0(10.0)	160	24	12.5	13/15	100/120	350	Marble
140"	3500	9.0(10.0)	180	24	13.0	13/15	100/120	300	Marble

1000000: 1000 10 1000 10 1000000 1000 10 1000000 1000000 1000 1000 1000 1000 1000000, 10  
 1000000 1000 10 1000000 1000 1000 1000000, 10000 10000 1000000 1000000 1000000 10!

□□□-□□□□□ □□ □□□-□□□□□ □□□□□ □□□□□□□□□□□□ □□ □□□□:

Blade Set	Blade Diameter	Thickness	Segment Size	Cutting Stone
#	#	mm	LxWxH	#
Multi Size	2200-600 Multi	4.5	24x6.4/5.6x13H(15H)	Granite
Multi Size	2200-600 Multi	5.0	24x7.0/6.2x13H(15H)	Granite
Multi Size	2200-600 Multi	5.5	24x7.4/6.6x13H(15H)	Granite
Multi Size	2200-600 Multi	6.5	24x8.4/7.6x13H(15H)	Granite
Multi Size	2500-800 Multi	5.5	24x7.4/6.6x13H(15H)	Granite
Multi Size	2500-800 Multi	6.5	24x8.4/7.6x13H(15H)	Granite
Multi Size	2500-800 Multi	7.2	24x9.2/8.4x13H(15H)	Granite
Multi Size	1600-960 Multi	6.5	24x8.4/7.6x13H(15H)	Granite
Multi Size	1600-960 Multi	7.2	24x9.2/8.4x13H(15H)	Granite
Single Size	40"/1000mm	4.5-5.0	24x7.0/6.2x13H(15H)	Granite
Single Size	48"/1200mm	5.0-5.5	24x7.5/6.5x13H(15H)	Granite
Single Size	64"/1600mm	6.5-7.2	24x9.2/8.4x13H(15H)	Granite
Single Size	48"/1200mm	4.0	24x5.5x8H(10H)	Marble
Single Size	48"/1200mm	4.5	24x6.0x8H(10H)	Marble
Single Size	48"/1200mm	5.0	24x7.5x8H(10H)	Marble
Single Size	48"/1200mm	5.5	24x8.0x8H(10H)	Marble
Single Size	64"/1600mm	6.5-7.2	24x9.2x10H(8H)	Marble
Single Size	64"/1600mm	6.5-7.2	24x9.5x13H(10H)	Marble

# Support Sample Processing Customization

## Style and Specifications



### Contact Salesman

Due to the large number of product specifications and styles, in order to avoid conflicts, please contact the salesman before placing the order.

1

### Provide Samples

The manufacturer supports the sample processing and customization, and the buyer provides the sample first to communicate the production requirements.



2



### Mail Samples

According to the buyer's demand for proofing, the manufacturer needs the buyer to pay the proofing fee first, and the sample fee will be returned after the order is concluded.

3

### Generate Order

The buyer receives the sample. If satisfied, place an order for batch production. After confirming the receipt, contact the salesman to return the proofing cost.



4

本公司提供定制服务，如有任何疑问，请致电 280-320 或发送邮件至 [sales@...](mailto:sales@...)，我们将竭诚为您服务！

联系我们：

地址：中国广东省广州市天河区... 电话：280-320









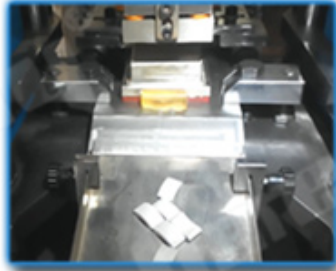


□□□□ □□□□ □□□□:

□□□□□□ □□□□□□ □□□□ □□□□□□□□ □□ □□ □□□□□□ □□ □□□□



● Cold Press Mschine



● Fill The Mold



● The Product Polishing



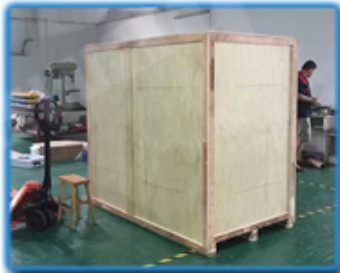
● Hot Press Machinery

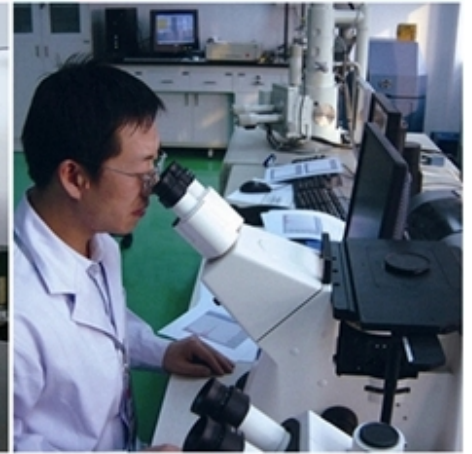


● Remove The Mold



● Packing







□□□□□□:

□□□□□□:

1. □□□□□ □□ □□□□□□ □□□□□□ □□□ □□□□□□ □□□□□□
2. □□□□□ □□□ / □□□□□ □□ □□□ □□□ □□□, □□□□□ □□□□□□ / □□□□□□ □□□□□□ □□
3. □□ □□ □□ 45 kg, □□ □□□ □□ □□□□□□ □□□□□□□□□□ □□□□□□ (□□□□□□□ □□□□ □□ □□□□ kg)
4. □□ □□□□□ □□□□□□□ □□□ □□□□ □□□□, □□ □□ □□□□□ □□ □□□□□□ □□□ □□□□□□ □□□□ □□□







No.605 Huahui 街, Shuitou 362342 Quanzhou, 福建省, 中国



电话: (+86) 595-86990206 /  电话: (+86) 595-86990220



手机 / **WhatsApp** / 电话: (+ 86) 18650679939



邮箱: **boreway@boreway.com**



联系人 姓名