

Table 1: Dimensions

Table 1: Dimensions

Table 1: Dimensions	Table 1: Dimensions	Table 1: Dimensions	Table 1: Dimensions
45mm	Table 1: Dimensions	Table 1: Dimensions	Table 1: Dimensions

Table 1: Dimensions

Table 1: Dimensions

Table 1: Dimensions	Table 1: Dimensions		Table 1: Dimensions	Table 1: Dimensions	Table 1: Dimensions
	Table 1: Dimensions	Table 1: Dimensions			
Table 1: Dimensions	5	125	3	30	M14 M16 5/8" - 11 42 mm 47 mm 50 mm
	6	150	4	45	
			3	30	
	8	200	6	45	
			4	30	
	10	250	8	45	
			5	30	
	12	300	10	45	
			6	30	

Table 2: Dimensions

Table 2: Dimensions

45 Pins Segment



Support

Easy to use, high efficiency, 5-8 times that of manual





□□□□:

1. □□□□ □□□□□□ □□ □□□□□□ □□□□□□ □□ □□□□□□ □□□□ □□ □□□□ □□□□
2. □□□□□□ □□ □□□□□□□□ □□ □□□□□□ □□□□□□□□ □□□□ □□ □□□□ □□□□
3. □□□□□□□□ □□□□□□□□ □□□□□□□□, □□□□□□ □□ □□ □□□□□□□□ □□□□□□
4. □□□□ □□□□□□□□□□ □□□□□□ □□ □□□□ □□□□□□□□ □□□□ □□□□□□ □□□□□□□□□□, □□□□□ □□ □□□□□□ □□ □□□□□□ □□□□□□
5. □□□□□□□□ □□ □□□□□□□□ □□□□ □□ □□ □□□□ □□ □□□□□□ □□□□□□ □□□□ □□ □□□□ □□□□□□□□□□□□□□ □□□□□□□□□□ □□ □□□□□□□□□□ □□□□

□□□□:

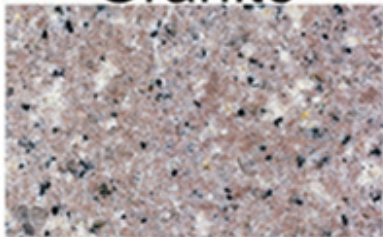
骨董骨董 骨董 骨董 骨董 骨董骨董 骨董骨董骨董骨董, 骨董骨董 骨董 骨董 骨董骨董 骨董 骨董 骨董骨董 骨董 骨董 骨董骨董 骨董 骨董 骨董骨董 骨董 骨董 骨董



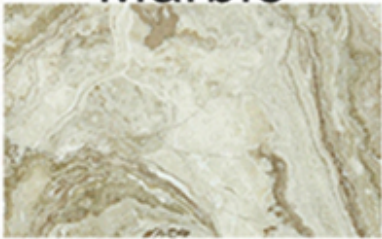
Coarse flowers and fine flowers can be adjusted at will.

boneway® Applicable materials

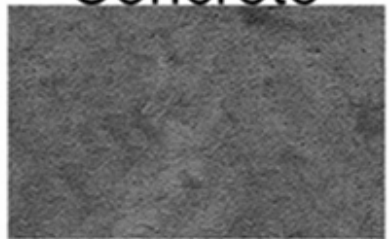
Granite



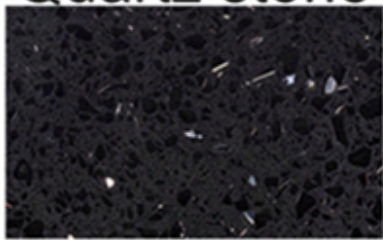
Marble



Concrete



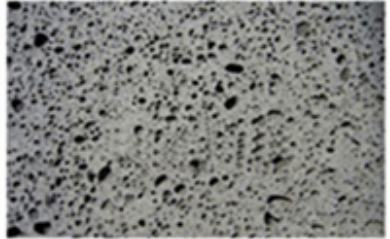
Quartz stone



Sandstone



Volcanic rocks





Boreway Machinery Co.,Ltd
www.fordiamondtools.com
www.diamondtools.top



Boreway Machinery Co.,Ltd
www.fordiamondtools.com
www.diamondtools.top

AAM3 270MM 45

：



：

：

1. 270MM 45
2. 45 / 270MM 45, 45 / 270MM 45
3. 45 kg, 45 kg

4. 𐀀 𐀀𐀀𐀀 𐀀𐀀𐀀 𐀀𐀀𐀀𐀀 𐀀𐀀 𐀀𐀀𐀀 𐀀𐀀, 𐀀𐀀 𐀀𐀀 𐀀𐀀𐀀𐀀 𐀀𐀀 𐀀𐀀𐀀𐀀𐀀 𐀀𐀀 𐀀𐀀𐀀𐀀𐀀 𐀀𐀀𐀀 𐀀𐀀



𐀀𐀀𐀀𐀀 𐀀𐀀𐀀:

1. 𐀀𐀀 moq: 𐀀𐀀 𐀀𐀀𐀀𐀀 𐀀𐀀 𐀀𐀀 𐀀𐀀𐀀 𐀀𐀀𐀀𐀀𐀀 𐀀𐀀 𐀀𐀀𐀀 𐀀𐀀 𐀀𐀀𐀀𐀀 𐀀𐀀 𐀀𐀀𐀀 𐀀𐀀 𐀀𐀀𐀀 𐀀𐀀 𐀀𐀀𐀀 𐀀𐀀𐀀
2. OEM 𐀀𐀀𐀀𐀀𐀀 𐀀𐀀 𐀀𐀀𐀀 𐀀𐀀: 𐀀𐀀 𐀀𐀀𐀀 𐀀𐀀𐀀𐀀 𐀀𐀀 𐀀𐀀𐀀𐀀 𐀀𐀀 𐀀𐀀𐀀𐀀 𐀀𐀀𐀀𐀀𐀀 𐀀𐀀 𐀀𐀀𐀀 𐀀𐀀𐀀
3. 𐀀𐀀𐀀𐀀 𐀀𐀀𐀀: 𐀀𐀀 𐀀𐀀𐀀 𐀀𐀀𐀀𐀀𐀀𐀀 𐀀𐀀 𐀀𐀀𐀀 𐀀𐀀𐀀𐀀𐀀𐀀𐀀𐀀𐀀 𐀀𐀀 𐀀𐀀𐀀𐀀 𐀀𐀀 𐀀𐀀 𐀀𐀀𐀀𐀀 𐀀𐀀 𐀀𐀀𐀀 𐀀𐀀 𐀀𐀀𐀀 𐀀𐀀𐀀
4. 𐀀𐀀𐀀𐀀 𐀀𐀀𐀀𐀀𐀀𐀀: 𐀀𐀀 𐀀𐀀𐀀 𐀀𐀀𐀀𐀀𐀀𐀀 𐀀𐀀𐀀𐀀𐀀𐀀 𐀀𐀀𐀀𐀀𐀀 𐀀𐀀 𐀀𐀀𐀀𐀀 𐀀𐀀 𐀀𐀀𐀀𐀀 𐀀𐀀𐀀𐀀𐀀𐀀𐀀𐀀𐀀
5. 𐀀𐀀𐀀 𐀀𐀀 𐀀𐀀𐀀𐀀: 𐀀𐀀 𐀀𐀀𐀀𐀀𐀀𐀀 𐀀𐀀 𐀀𐀀𐀀 𐀀𐀀𐀀 𐀀𐀀

𐀀𐀀𐀀𐀀𐀀 𐀀𐀀𐀀𐀀:

1. 𐀀𐀀 𐀀𐀀𐀀𐀀𐀀 𐀀𐀀 𐀀𐀀𐀀 𐀀𐀀 𐀀𐀀𐀀 𐀀𐀀, 𐀀𐀀 𐀀𐀀 𐀀𐀀𐀀 𐀀𐀀𐀀𐀀𐀀 𐀀𐀀 𐀀𐀀𐀀𐀀 𐀀𐀀𐀀 𐀀𐀀𐀀𐀀 𐀀𐀀?
𐀀𐀀𐀀𐀀 𐀀𐀀 𐀀𐀀𐀀𐀀 𐀀𐀀 𐀀𐀀𐀀 𐀀𐀀𐀀 𐀀𐀀𐀀 𐀀𐀀 𐀀𐀀 𐀀𐀀𐀀𐀀𐀀 𐀀𐀀𐀀, 𐀀𐀀 𐀀𐀀𐀀 𐀀𐀀𐀀𐀀𐀀 𐀀𐀀 𐀀𐀀 𐀀𐀀𐀀𐀀𐀀
𐀀𐀀𐀀𐀀𐀀 𐀀𐀀, 𐀀𐀀𐀀𐀀
8. 𐀀𐀀 𐀀𐀀 𐀀𐀀𐀀 𐀀𐀀, 𐀀𐀀𐀀𐀀 𐀀𐀀𐀀𐀀𐀀𐀀 𐀀𐀀 𐀀𐀀𐀀𐀀𐀀𐀀 𐀀𐀀 𐀀𐀀𐀀𐀀, 𐀀𐀀𐀀𐀀𐀀 𐀀𐀀 𐀀𐀀 𐀀𐀀 𐀀𐀀𐀀 𐀀𐀀𐀀𐀀𐀀
𐀀𐀀𐀀 𐀀𐀀𐀀
𐀀𐀀𐀀𐀀𐀀 𐀀𐀀𐀀𐀀

2. 2000 2000 2000 2000 2000 2000?

2000 2000 2000 2000 2000 2000, 2000: 2000 2000 2000 2000 2000 2000, 2000 2000 2000 2000 2000 2000

2000 2000 2000, 2000 2000 2000 2000 2000 2000 2000 2000 2000 2000 2000 2000

2000 2000 2000 2000 2000 2000 2000 2000 2000 2000 2000 2000 2000 2000 2000 2000 2000 2000

2000 2000 2000 2000 2000 2000, 2000 2000 2000 2000 2000

3. 2000 2000 2000-2000 2000 2000?

2000 2000 2000, 2000 2000 2000 2000 2000 2000, 2000 2000 2000 2000 2000 2000 2000 2000

2000 2000 2000 2000 2000 2000 2000 2000 2000