

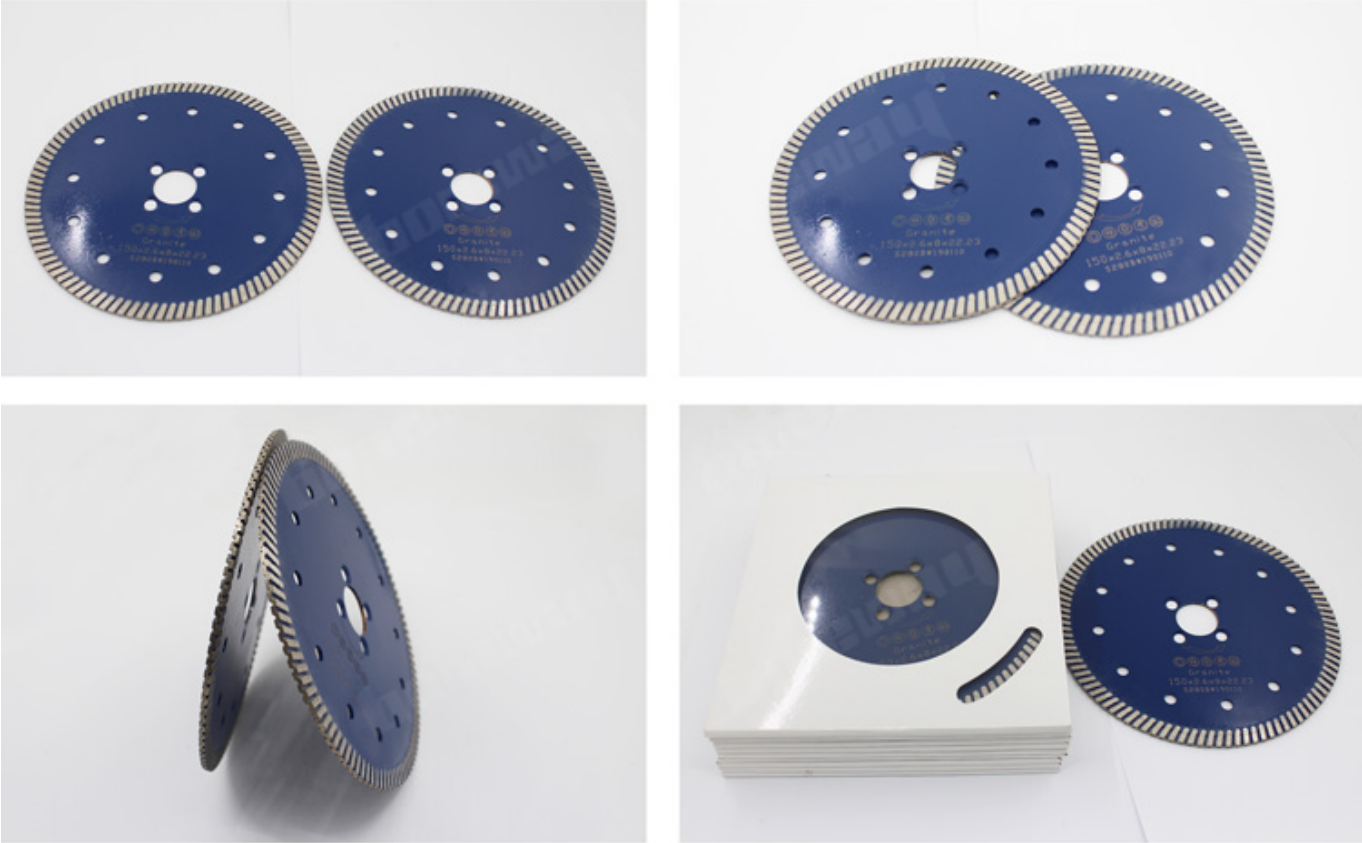
200 200

200

200

- 1. Great
- 2.
- 3.
- 4.

200



200

200

200

Our factory use original high grade diamond



pk

Other factory mix second diamond selected from waste segment

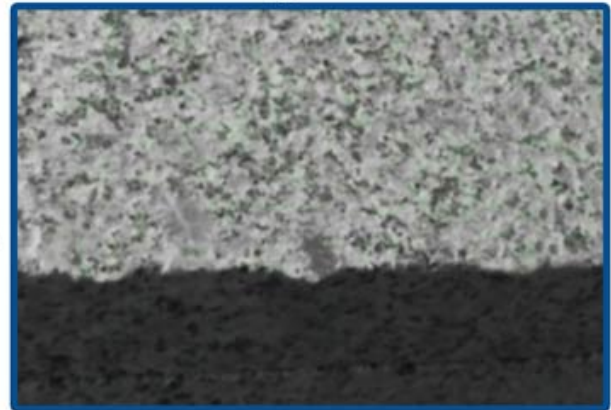


Our blade cutting effect



pk

Other supplier blade cutting effect



1. 鋸片 鋸片 鋸片 鋸片 鋸片 鋸片 鋸片 鋸片 鋸片 鋸片

2. 鋸片 鋸片 鋸片 鋸片 鋸片 鋸片 鋸片 鋸片 鋸片 鋸片, 鋸片 鋸片 鋸片 鋸片, 鋸片 鋸片, 鋸片 鋸片 鋸片 鋸片 鋸片 鋸片, 鋸片 鋸片 鋸片

鋸片 鋸片 鋸片:

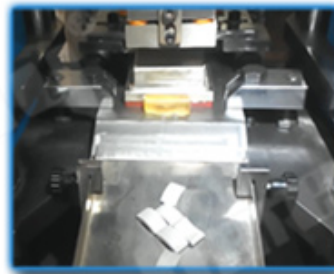
鋸片 鋸片 鋸片 鋸片 鋸片 鋸片 鋸片 鋸片 鋸片 鋸片:

|

□□□□□□ □□□□□□□□ □□□□ □□□□□□ □□ □□□□ □□□□, □□□□ □□□□□□□□ □□□□□□ □□ □□□□ □□ □□□□□□
□□□□□□ □□ □□□□ □□□□



● Cold Press Mchine



● Fill The Mold



● The Product Polishing



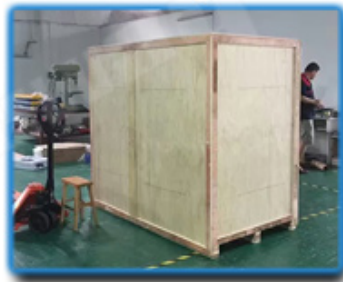
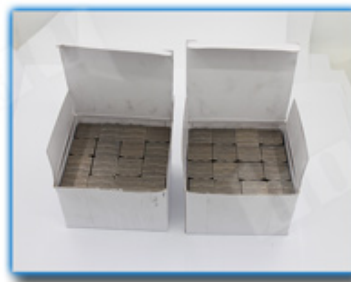
● Hot Press Machinery



● Remove The Mold



● The Product Polishing



● Packing

Question 1:

1. Describe the main steps of the production process, from raw material to finished product. What are the main components of the product, and how are they processed? What are the main stages of the production process? What are the main components of the product? How are the components processed? What are the main stages of the production process? What are the main components of the product? How are the components processed?

2. Explain the purpose of the hot press machinery in the production process. How does it differ from the cold press machinery?

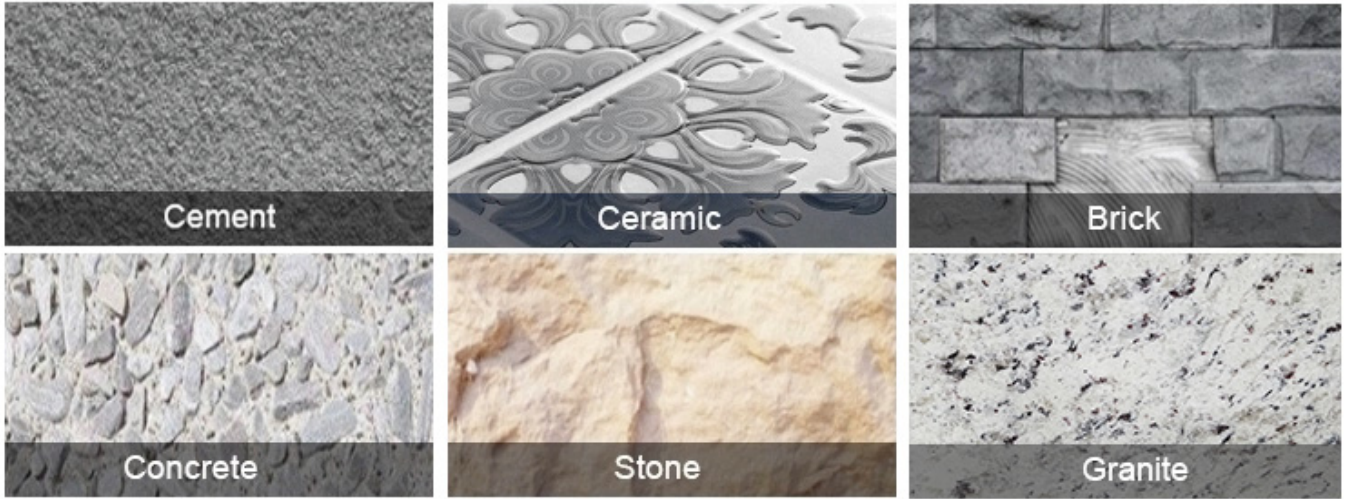
3. Discuss the importance of the polishing step in the production process. How does it affect the quality of the final product? What are the main stages of the production process? What are the main components of the product? How are the components processed?

4. Describe the packaging process for the final product. How is the product protected during transport and storage?

Question 2:

□□□ □□□□□□, □□□□ □□ □□□ □□□□!

200 □□□□ □□□□ □□□□ □□□ □□□□□□ □□□□ □□□□ □□□□ □□ □□□□□□ □□ □□□□ □□□□□□ □□□□□□, □□□□□□, □□□□ □□□□□□, □□□□ □□□□□□, □□□□□□□□ □□□□ □□□□ □□□□ □□□ □□ □□□ □□□□□□ □□□□

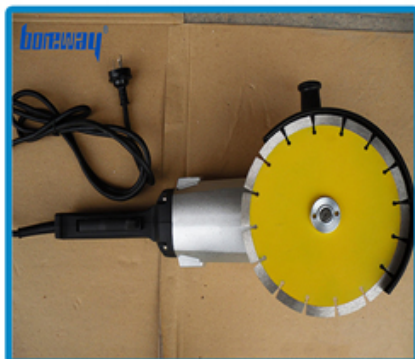


□□□□□ □□□□□:

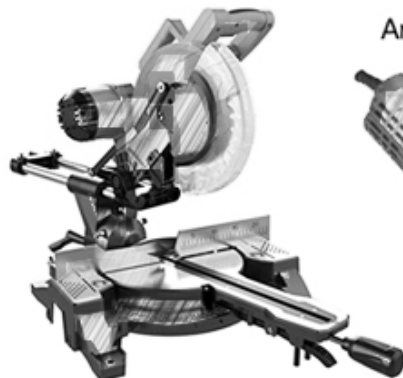
□□□□□□ □□□□ □□□□ □□□□□ □□□□□ □□□□ □□ □□□□ □□□ □□ □□□□□, □□□□□□□□ □□□□□, □□□□□ □□□□□, □□□□ □□□□□



Electric circular saw



Angle Grinder

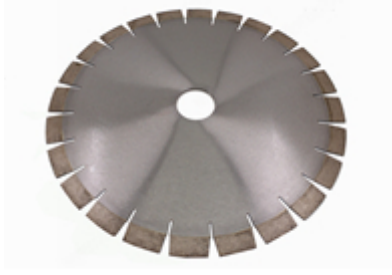


Multi-function cutting machine



Road cutting machine

□□□□□□□ □□□□□□□:



Boreway Machinery Co., Ltd.
www.diamondtools.top
www.boreway.com

350 * 3.2 * 20 * 40 50/60



Boreway Machinery Co., Ltd.
www.diamondtools.top
www.boreway.net

40 1200

□□□□ □□□□ □□□□:





□□□□□□:

□□□□□□:

1. □□□□□□ □□ □□□□□□ □□□□□□ □□□ □□□□□□ □□□□□□
2. □□□□□ □□□ / □□□□□ □□□ □□□ □□□ □□□, □□□□□ □□□□□□ / □□□□□□ □□□□□□□□ □□
3. □□ □□ □□ 45 kg, □□ □□□ □□ □□□□□ □□□□□□□□□□ □□□□□□ (□□□□□□□ □□□□ □□ □□□□ kg)
4. □□ □□□□□□ □□□□□□□□ □□□□□□ □□□□ □□□□□□, □□ □□ □□□□□□ □□ □□□□□□ □□□ □□□□□□ □□□□□□ □□□□ □□□

本公司提供各種機械設備，歡迎各界人士垂詢。如有需要，請洽本公司業務部。

3. 關於我們 歡迎各界人士垂詢 請洽本公司業務部

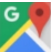
本公司，是專業經營各種機械設備，提供各種機械設備，歡迎各界人士垂詢。如有需要，請洽本公司業務部。本公司經營各種機械設備，提供各種機械設備，歡迎各界人士垂詢。如有需要，請洽本公司業務部。


歡迎各界人士垂詢 請洽本公司業務部

本公司，是專業經營各種機械設備，提供各種機械設備，歡迎各界人士垂詢。如有需要，請洽本公司業務部。本公司經營各種機械設備，提供各種機械設備，歡迎各界人士垂詢。如有需要，請洽本公司業務部。

歡迎各界人士垂詢 請洽本公司業務部

Fujian Nanan *boreway* Machinery Co.,Ltd.

 No.605 Huahui 路, Shuitou 鎮 362342 Quanzhou, 福建省, 中國

 電話: (+86) 595-86990206 /  電話: (+86) 595-86990220

 電話 / **WhatsApp** / 電話: (+ 86) 18650679939

 郵箱: **boreway@boreway.com**

 歡迎各界人士垂詢