

Introduction:

1. Wet use 8 steps diamond floor polishing pads are specially designed for floor renovation, they are suitable for stone, concrete, ceramic, epoxy and other floors.
2. The standard thickness of these polishing pads is 15mm, diameter is 4inch 100mm, 1 set pads includes 8 pieces, the grit are 30#, 50#, 100#, 200#, 400#, 800#, 1500# and 3000#, you can choose between three and five grit to use (The effect is not as good as a complete set, but the efficiency may be much faster);
3. BOREWAY can provide three quality (Premium, Standard, Economical) diamond polishing pads, do not confuse these pads with cheap thin pads. Color coded for easy identification. Velcro backing for quick pad changes;
4. BUFF polishing pads also could be supplied, it could make materials more brightness.
5. If the ground conditions are bad, we suggest using floor grinding blocks first, and then using floor polishing pads.

Features:

1. Easy to use, polishing efficiency is faster;
2. Logo could be customized after communication;
3. High quality resin powder and diamond are adopted;
4. With BUFF pads, polishing brightness is higher than 95 glossness;
5. Adopt the high-quality nylon sticky cloth, adhesion is good and the reusable is not easy to be damaged.

Specification:

Model No	Diameter	Thickness	Grit	Quality class	Applicable	Holder
BW-DPP-F-SY4024	100mm	15mm	30# 50# 100# 200# 400# 800# 1500# 3000#	Premium Standard Economical	Natural stone Artificial stone Concretes Ceramics	Velcro

Other thickness and diameter can be customized according to need.

Images:

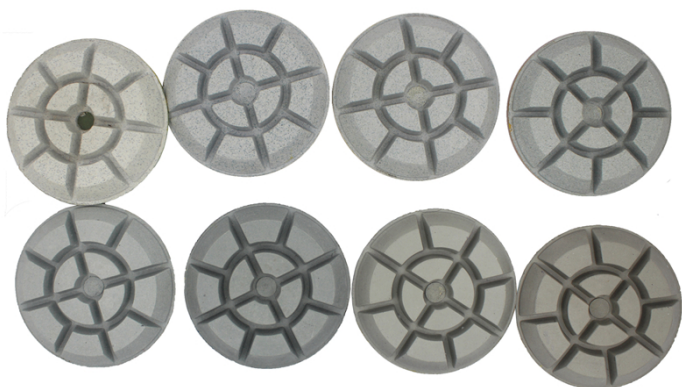
boreway[®]



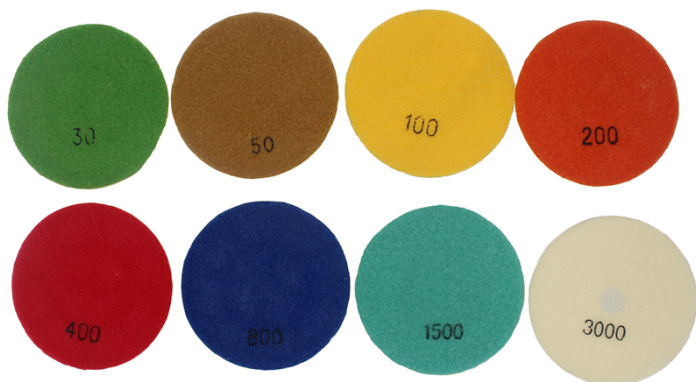
boreway[®]



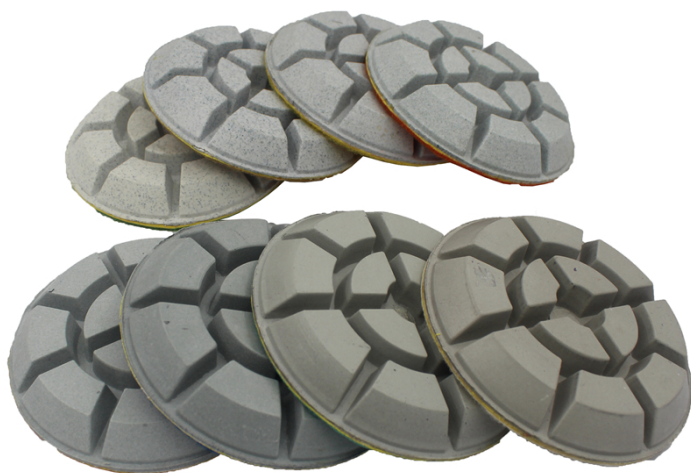
boreway[®]



boreway[®]



boreway[®]



boreway[®]



If you want know more images, please contact us.

Contact us:

Fujian Nanan Boreway Machinery Co.,Ltd.

Address: Huahui Center 605, Shuitou Town,Quanzhou, Fujian, China

Post Code: 362342

TEL: (+86)595-86990206/(+86)18250633812

FAX: (+86)595-86990220

WhatsApp: +86-18359335376

Facebook: ChoisDong

Email: boreway05@boreway.net