

2020 Old Fashioned 60s Carbide Bush Hammer Wheel Diamond Grinding Head For Concrete Stone Litchi Surface

Feature:

60s Carbide Bush Hammer Wheel

1. Use and maintenance of bush hammer
2. Operating Speed: 700-800 RPM
3. Wet use strongly recommended and the more water the better
4. Roller tips can be re-dressed with diamond blades when they become inefficient.
5. After each use, please clean up rollers, dry and apply oil to the spindles. It will be ideal to submerge the rollers in oil to prevent spindle rust
6. Do not apply too much pressure on bush hammer. This will prevent roller from stopping and thus decrease the life span of the tungsten steel

Descriptions:

60s Carbide Bush Hammer Wheel can be used with floor machines or powerful grinders for bush hammering of concrete floors and surfaces.

Adjustment of grit for bush-hammered surface.

The Roughness of the bush hammered surface can be adjusted with our bush hammer through adjustment of spring elasticity on the bush hammer, or through the pressure of the manual grinding machine.

Loosening spring elasticity or less pressure will increase the roughness of hammering result and tightening the springs or increase machine pressure will reduce roughness to give the bush hammered surface a finer look.

Specifications:

The normal size of **60s Carbide Bush Hammer Wheel**:

| Out Side | Tips No. | Material | Number of Head Rows | Technology: |
|----------|----------|----------|---------------------|-----------------------------------|
| 80MM | 60S | Alloy | 3 Row | High Frequency and Oxygen Welding |

Specially designed tools are available for any standard application. We can customize tools as per your exact needs.

Specification of grinding disc:

| Product Name | Out Diameter | | Roller Quantity | Segment Quantity | Connection |
|-------------------|--------------|-----|-----------------|------------------|--|
| | Inch | mm | | | |
| Bush Hammer Plate | 5 | 125 | 3 | 30 | M14 M16 5/8''-11 42mm 47mm 50mm |
| | 6 | 150 | 4 | 45 | |
| | | | 3 | 30 | |
| | 8 | 200 | 6 | 45 | |
| | | | 4 | 30 | |
| | 10 | 250 | 8 | 45 | |
| | | | 5 | 30 | |
| | 12 | 300 | 10 | 45 | |
| | | | 6 | 30 | |

Advantage:

60s Carbide Bush Hammer Wheel

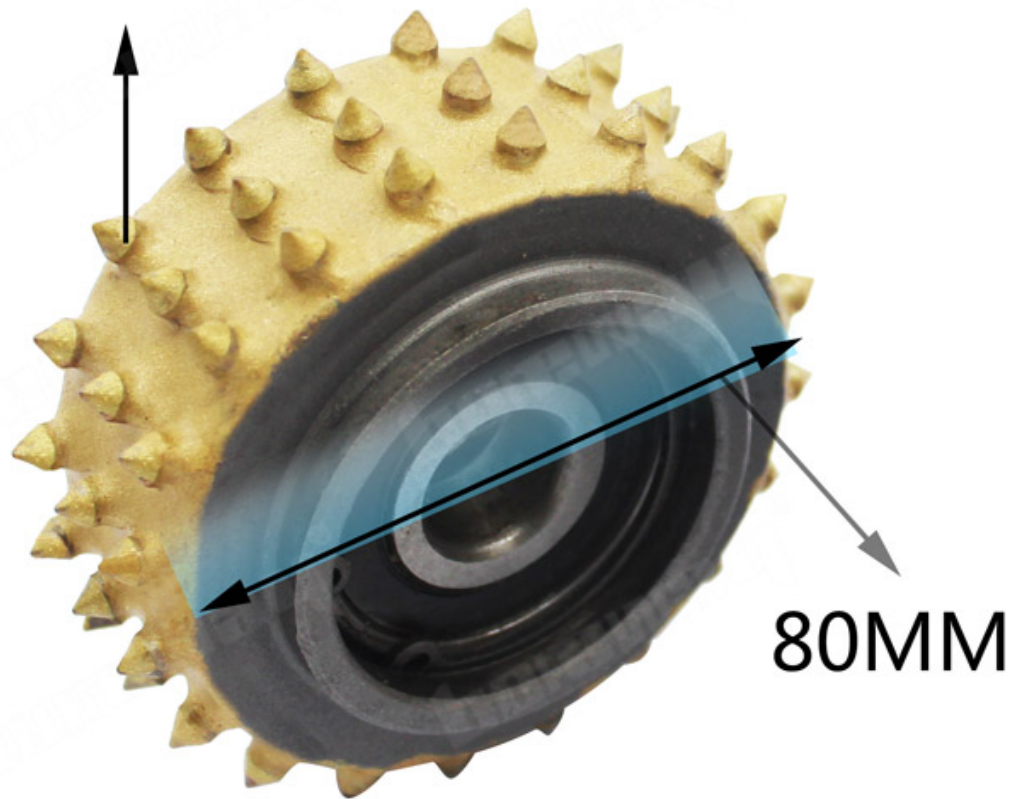
1. Different granularities and sizes as requested for the diamond roller.
2. Effective for grinding natural stones to get bush hammer effect, also called litchi surfac.
3. To expose the aggregate in concrete floors to prepare for concrete polishing.
4. Effective for grinding natural stones to get bush hammered effect, also called litchi surface.
5. To use as a scarifying machine with the advantage that it is aggressive but gentle enough not to “dig” uncontrollably into the floor surface.

Product Details:

60s Carbide Bush Hammer Wheel for stone the roughness of the bush hammered surface can be adjusted with our bush hammer through adjustment of spring elasticity on the bush hammer, or through the pressure of the manual grinding machine.



60 Teeth



Number of Head Rows: 3 Row
60s Carbide Bush Hammer Wheel

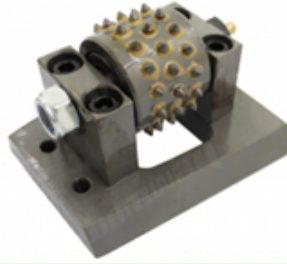


Related Products:



Boreway Machinery Co.,Ltd
www.diamondtools.top
www.boreway.net

Bush Hammer Roller With 60S

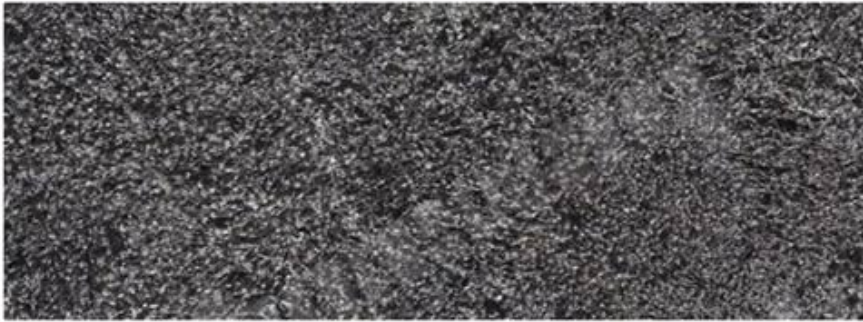


Boreway Machinery Co.,Ltd
www.diamondtools.top
www.boreway.net

45s Frankfurt Bush Hammer Blodk

Qther bush hammer roller

60s Carbide Bush Hammer Wheel



If you want more details of bush hammer, please contact us.

boreway® Multi size bush hammer tools



FAQ:

1. What can Bush Hammers do?

Surface Prep for coatings.

Quickly expose large aggregate.

Remove hard coatings and overlays.

2. What is the bush hammer tool?

Bush Hammers have been around a long time and have proven the easiest way to texturize stone, concrete & asphalt.

3.How to use and maintain bush hammer tool?

Do not apply too much pressure on the bush hammer. This will prevent the roller from stopping and thus decrease the life span of the tungsten steel.

After each use, please clean up rollers, dry and apply oil to the spindles. It will be ideal to submerge the rollers in oil to prevent spindle rust.

Roller tips can be re-dressed with diamond blades when they become inefficient.

Logistics:

Sample order ship by DHL, UPS, FedEx, TNT, EMS etc

For mass order delivery, can be optional with terms of Exwork, FOB, CNF, CIF by air or by sea based on the buyer's forwarder or ours



Contact Us:

Fujian Nanan **boreway**® Machinery Co.,Ltd.



No.605 Huahui Center, Shuitou Town 362342 Quanzhou, Fujian, China



TEL: (+86)595-86990206 /  **Fax:** (+86)595-86990220



Mobile/WhatsApp/Wechat: (+ 86) 18650679939



E-mail: boreway@boreway.com



Lyon Chang