

Introduction:

Diamond segment router bit is widely used on doing bullnoses on 20mm granite and other natural stones.

These are fitting master, sector and other profiling machines.

Features:

1. Good balance and stable performance.
2. Sintered segment is easily stock removal.

Parameters:

Diamond Profile Router Wheel

Diameter	Shape of Stone	Thickness	Grit No.
50~125mm	A, B, D, E, F, G, H, I, L, M,N, O,P,Q,S,T,U, V,WF,DD,DC	20mm 30mm 40mm 50mm	Coarse Medium Fine

The specifications only for reference, other specifications can be customized.

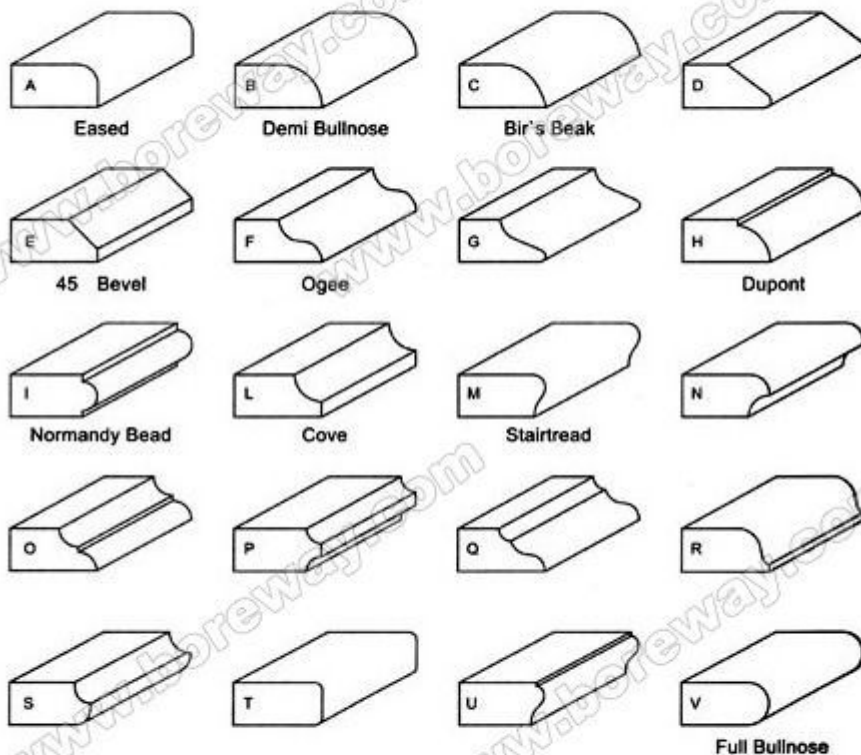
Pictures of Product:

Diamond Profile Router Wheel

boreway®



Boreway Machinery Co., Ltd.
www.diamondtools.top
www.boreway.com



Boreway Machinery Co., Ltd
www.boreway.com

Contact Us:

Fujian Nanan **boreway** Machinery Co.,Ltd.

 No.605 Huahui Center, Shuitou Town 362342 Quanzhou, Fujian, China

 **TEL:** (+86)595-86990206 /  **Fax:** (+86)595-86990220

 **Mobile/WhatsApp/Wechat:** (+ 86) 18650679939

 **E-mail:** boreway@boreway.com

 **Lyon Chang**