

Boreway Multiple Purposes Diamond Tools Of Stone Cutting Blade Segment For Granite Manufacturer

Advantage:

1. **Multiple purposes diamond tools** is easy for diamond opening.
2. Good cutting result: smooth cutting, flat surface and even size.
3. Stable cutting, narrow cutting gap, stone waste reduction.
4. 1400mm high grade diamond disc segment has good sharpness and high efficiency at the process of cutting, meanwhile, it has a long lifespan.

Feature:

2.A large number of exported to eastern Europe, North America, South America, Middle East, Australia and other overseas markets; Product quality is unanimously recognized the overseas customers.

1.**Multiple purposes diamond tools** diamond sheet feed and (Ti + Cr + Ni + Co, etc.) to form chemical bonds, can reduce the threshing, improve the edge, extend the service life.

Specification:

The following are normal specifications **Multiple purposes diamond tools:**

| Diameter(mm) | Thickness(mm) | Teeth(pcs) | L | W | H | Hole(mm) | Max. RPM |
|----------------|---------------|------------|----|-----------|-------|----------|----------|
| 3000mm,120inch | 9.0(10.0□) | 160 | 24 | 12.5/11.5 | 20/30 | 100/120 | 300 |

The above specifications is only for reference, other specifications may be available as per customer's demand.

Other specifications of cutter segment:

| Diameter | | Thickness | Teeth | Segment Size | | | Hole | Max. RPM | Cutting Stone |
|----------|------|-----------|---------|--------------|-----------|----------|---------|----------|---------------|
| Inch | mm | mm | pcs/set | L | W | H | mm | RPM | # |
| 10" | 250 | 1.8(2.2) | 17 | 40 | 3.2 | 8/10/12 | 50/60 | 3450 | Granite |
| 12" | 300 | 1.8(2.2) | 21 | 40 | 3.2 | 12/15/20 | 50/60 | 2850 | Granite |
| 14" | 350 | 2.2(2.4) | 24 | 40 | 3.2 | 12/15/20 | 50/60 | 2450 | Granite |
| 16" | 400 | 2.6(2.8) | 28 | 40 | 3.6 | 12/15/20 | 50/60 | 2150 | Granite |
| 18" | 450 | 2.8(3.0) | 32 | 40 | 4.2 | 12/15/20 | 50/60 | 1900 | Granite |
| 20" | 500 | 2.8(3.0) | 36 | 40 | 4.2 | 12/15/20 | 50/60 | 1750 | Granite |
| 24" | 600 | 3.6(3.2) | 42 | 40 | 4.6 | 12/15/20 | 50/60 | 1450 | Granite |
| 32" | 800 | 4.2(4.5) | 57 | 40 | 5.5 | 12/15/20 | 50/60 | 1150 | Granite |
| 36" | 900 | 5.0(5.5) | 64 | 40 | 6.5 | 12/15/20 | 60/80 | 950 | Granite |
| 36" | 900 | 5.0(5.5) | 64 | 24 | 7.0/6.2 | 13/15/20 | 60/80 | 950 | Granite |
| 40" | 1000 | 5.0(5.5) | 70 | 24 | 7.0/6.2 | 13/15/20 | 80/100 | 850 | Granite |
| 48" | 1200 | 5.5(6.0) | 80 | 24 | 7.4/6.6 | 13/15/20 | 80/100 | 750 | Granite |
| 56" | 1400 | 6.0(6.5) | 92 | 24 | 8.4/7.6 | 13/15/20 | 80/100 | 600 | Granite |
| 64" | 1600 | 6.5(7.2) | 108 | 24 | 9.2/8.4 | 13/15/20 | 80/100 | 550 | Granite |
| 72" | 1800 | 7.2(8.0) | 120 | 24 | 10.0/9.2 | 13/15/20 | 80/100 | 500 | Granite |
| 80" | 2000 | 8.0(9.0) | 128 | 24 | 11.0/10.0 | 15/20 | 100/120 | 450 | Granite |
| 86" | 2200 | 8.0(9.0) | 132 | 24 | 11.0/10.0 | 15/20 | 100/120 | 400 | Granite |
| 100" | 2500 | 9.0(10.0) | 140 | 24 | 12.0/11.0 | 15/20 | 100/120 | 350 | Granite |
| 120" | 3000 | 9.0(10.0) | 160 | 24 | 12.5/11.5 | 20/30 | 100/120 | 300 | Granite |
| 140" | 3500 | 9.0(10.0) | 180 | 24 | 13.0/12.0 | 20/30 | 100/120 | 250 | Granite |

Multi-blade and single-disc saw blade specifications:

| Blade Set | Blade Diameter | Thickness | Segment Size | Cutting Stone |
|-------------|----------------|-----------|---------------------|---------------|
| # | # | mm | LxWxH | # |
| Multi Size | 2200-600 Multi | 4.5 | 24x6.4/5.6x13H(15H) | Granite |
| Multi Size | 2200-600 Multi | 5.0 | 24x7.0/6.2x13H(15H) | Granite |
| Multi Size | 2200-600 Multi | 5.5 | 24x7.4/6.6x13H(15H) | Granite |
| Multi Size | 2200-600 Multi | 6.5 | 24x8.4/7.6x13H(15H) | Granite |
| Multi Size | 2500-800 Multi | 5.5 | 24x7.4/6.6x13H(15H) | Granite |
| Multi Size | 2500-800 Multi | 6.5 | 24x8.4/7.6x13H(15H) | Granite |
| Multi Size | 2500-800 Multi | 7.2 | 24x9.2/8.4x13H(15H) | Granite |
| Multi Size | 1600-960 Multi | 6.5 | 24x8.4/7.6x13H(15H) | Granite |
| Multi Size | 1600-960 Multi | 7.2 | 24x9.2/8.4x13H(15H) | Granite |
| Single Size | 40"/1000mm | 4.5-5.0 | 24x7.0/6.2x13H(15H) | Granite |
| Single Size | 48"/1200mm | 5.0-5.5 | 24x7.5/6.5x13H(15H) | Granite |
| Single Size | 64"/1600mm | 6.5-7.2 | 24x9.2/8.4x13H(15H) | Granite |
| Single Size | 48"/1200mm | 4.0 | 24x5.5x8H(10H) | Marble |
| Single Size | 48"/1200mm | 4.5 | 24x6.0x8H(10H) | Marble |
| Single Size | 48"/1200mm | 5.0 | 24x7.5x8H(10H) | Marble |
| Single Size | 48"/1200mm | 5.5 | 24x8.0x8H(10H) | Marble |
| Single Size | 64"/1600mm | 6.5-7.2 | 24x9.2x10H(8H) | Marble |
| Single Size | 64"/1600mm | 6.5-7.2 | 24x9.5x13H(10H) | Marble |

Support Sample Processing Customization

Style and Specifications



Contact Salesman

Due to the large number of product specifications and styles, in order to avoid conflicts, please contact the salesman before placing the order.

1

Provide Samples

The manufacturer supports the sample processing and customization, and the buyer provides the sample first to communicate the production requirements.



2



Mail Samples

According to the buyer's demand for proofing, the manufacturer needs the buyer to pay the proofing fee first, and the sample fee will be returned after the order is concluded.

3

Generate Order

The buyer receives the sample. If satisfied, place an order for batch production. After confirming the receipt, contact the salesman to return the proofing cost.



4

Factory=Quality Control=Competitive Price=Own technology=OEM

Note:

Cutting of the cutting tools to add some water, and water flow, make it a better cooling effect.

Otherwise required for composite saw blade speed in 280-320 revolutions per minute, car speed away too fast!

Product Details:

Multiple purposes diamond tools



Multi-Layer Wearable Diamond Saw Blade Disc Tools

Example :

Stone is soft and abrasive therefore we would use a hard bonded blade. Reinforced concrete

with river pebble aggregate is hard therefore we would use a soft bonded blade.

Hard Bond

Means that the compilation of metals when sintered together forms a segment of approximately 105 to 120 HRB (hardness) and is very resistant to the soft abrasive materials being sawn, thus releasing diamond at the appropriate rate.

Hard bonds typically consist of the following metal powders - cobalt, iron, tungsten carbide and are grey to dark grey in colour.

Soft Bond

Means that the compilation of metals when sintered together forms a segment of approximately 90 to 105 HRB (hardness) and allows the segment to wear quicker thus retaining diamond on the cutting surface.

Soft bonds typically consist of the following metal powders - copper, bronze and cobalt, and are generally bronze to light silver in colour.

Applications:

Multiple purposes diamond tools using in block cutting for 900-3500mm circular saw blades for block cutting

Diamond segment cutting granite, sandstone, various hard stone with quartz.

Hot press v shape diamond segment only wet use



Granite

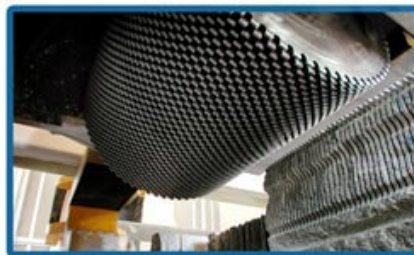


Sandstone



Quartz

For Block Cutting of Granite, Sandstone, Slate, Kinds of Hard Stone with quartz



One is single size multi cutter, which all blade sizes in same thickness and diameter while the other is multi size multi cutter, two sizes or more different size diameter blades used together in one stone machine.

Applications machine:

Multiple purposes diamond tools used for single or multi circular saw blade from 900mm to 3500mm, cutting of granite, sandstone, various hard stone with quartz.



Our factory use original high grade diamond



pk

Other factory mix second diamond selected from waste segment

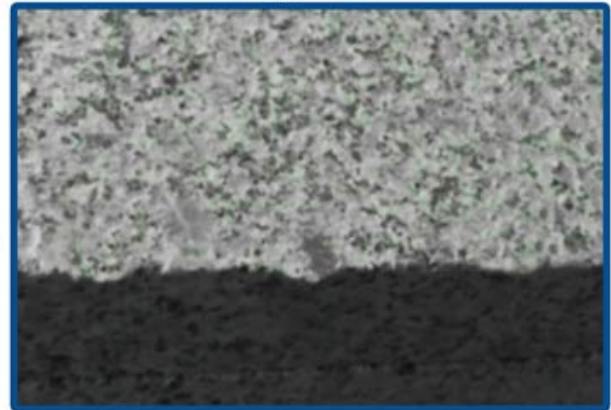


Our blade cutting effect



pk

Other supplier blade cutting effect



1. If the material is hard, the bond of the diamond segments should be softer.
Because diamonds will become blunt when cutting hard material. Softer bond can be worn down with the blunt diamonds faster, then make new diamonds beneath be more easily exposed to participate in cutting
2. If the material is relatively softer, the bond should be harder.
The diamonds can last longer in this case. The harder bond wears slower, so that it can hold the diamonds also longer. This can make better use of the diamonds and prolong the diamond tool's service life.

Applications machine:

Welding method: **Multiple purposes diamond tools** silver welding by high frequency welding machine

High frequency silver welded machine is recommended instead of welding by fire.

Don't weld diamond segment for a long time, just a few minutes, otherwise the diamond inside might be damaged because of the high temperature, which will affect the cutting performance of the granite segment greatly.



Brazing Machine Welding Rack

+

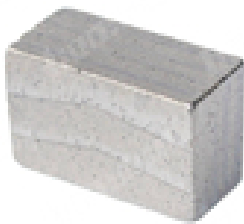


Three Phase 380V 30kW High Frequency Induction Welding Machine



Welding segment effect

Related Products:



Boreway Machinery Co.,Ltd
www.diamondtools.top
www.boreway.net

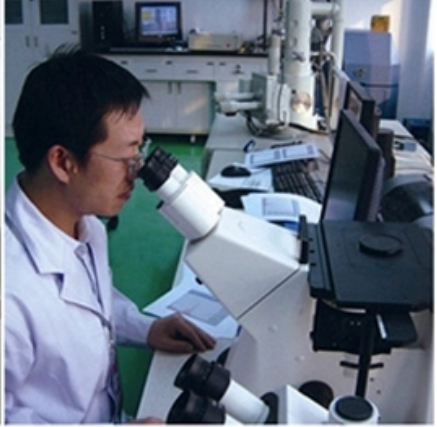
[1800mm Multi-Layer Segment](#)



Boreway Machinery Co.,Ltd
www.diamondtools.top
www.boreway.net

[II Shape Diamond Blade Segments](#)

About us:





Packing & Delivery:

1. Tools packing in carton cases;
2. When tools are in large quantities, they are packing in wooden cases.

-DELIVERY-

Less than 45kg,generally delivery by express(Door to Door).



By Air / Sea for batch goods, Airport / Port receiving.

BY AIR



BY SEA



Our service:

1. Low order quantity: It can meet the test order you need.
2. Fast delivery: We get great discounts from freight forwarders.
3. OEM Acceptable: We can produce according to your samples or drawings.
4. Good quality: We have a strict quality control system. Has a good reputation in the market.
5. Good service: We regard our customers as God with a high degree of professionalism and enthusiasm.

FAQ:

1. If we want to order your product, how do we know your quality?

You can test with a small order, and then you will know the quality. Nowadays, many people in the world use Chinese products because of their high quality and high cost performance. We are a professional diamond tool manufacturer with more than 8 years of manufacturing experience.

2. Can you provide samples for free?

We do not provide free samples. Based on years of experience, we believe that customers

will want them because of their reliable quality. By purchasing samples, we will cherish and appreciate them and make them get more. We are ready to offer our potential customers a special discount on samples. It's very important that you give us feedback, and we will appreciate it.

3. Does your company accept customization?

Of course, we accept customization. Including different colors, cutting objects, etc. We can also tag your own label and company brand. If you want us to make any new products for you, just send your products to us. Whether it's drawings or samples, we have the ability to produce the same products. We will not sell these products to others, only customers can get permission.

Please note:

Please use high frequency Silver Welded machine instead of Fire to make the brazing, the welding time is only a few seconds, otherwise the diamond inside the segments will probably be damaged by the high temperature, then the cutting performance will be Reduced!

Contact us:

Fujian Nanan *boreway* Machinery Co.,Ltd.

 No.605 Huahui Center, Shuitou Town 362342 Quanzhou, Fujian, China

 **TEL:** (+86)595-86990206 /  **Fax:** (+86)595-86990220

 **Mobile/WhatsApp/Wechat:** (+ 86) 18650679939

 **E-mail:** boreway@boreway.com

 **Lyon Chang**