

## Introduction:

1. Bush hammer plate is used for grinding the surface of granite, marble, concrete and other materials, grind into a rough surface, It plays the role of anti-skid and also can play the role of decoration;
2. The repeated hit of these carbide tips into stone or concrete surface creates a rough, pockmarked texture that looks like naturally weathered rock;
3. This segments of the bush hammer roller is carbides, each plate has 3 rollers, each roller has 30 segments, the connections of the palte is M14, this bush hammer plate can be used on hand held grinder machine;
4. It is suggested that the rotational speed is below 700 RPM, bush hammer tool is 5-6 times faster than manual times, the cost is greatly saved;
5. The grit of bush hammer face can be adjusted and the size of adaptor decide to its machine, other specifications can be customized according to requirements.

## Features:

Bush hammer tools usually used in the following aspects:

1. For floor preparation before laying new coatings;
2. To remove old glue and resin coatings, in particular thick resins;
3. For grinding floors, make the ground rough and do antiskid treatment;
4. For grinding floors, can be prepared for the subsequent ground laying materials;
5. For processing stone surface, pockmarked texture that looks like naturally weathered rock.

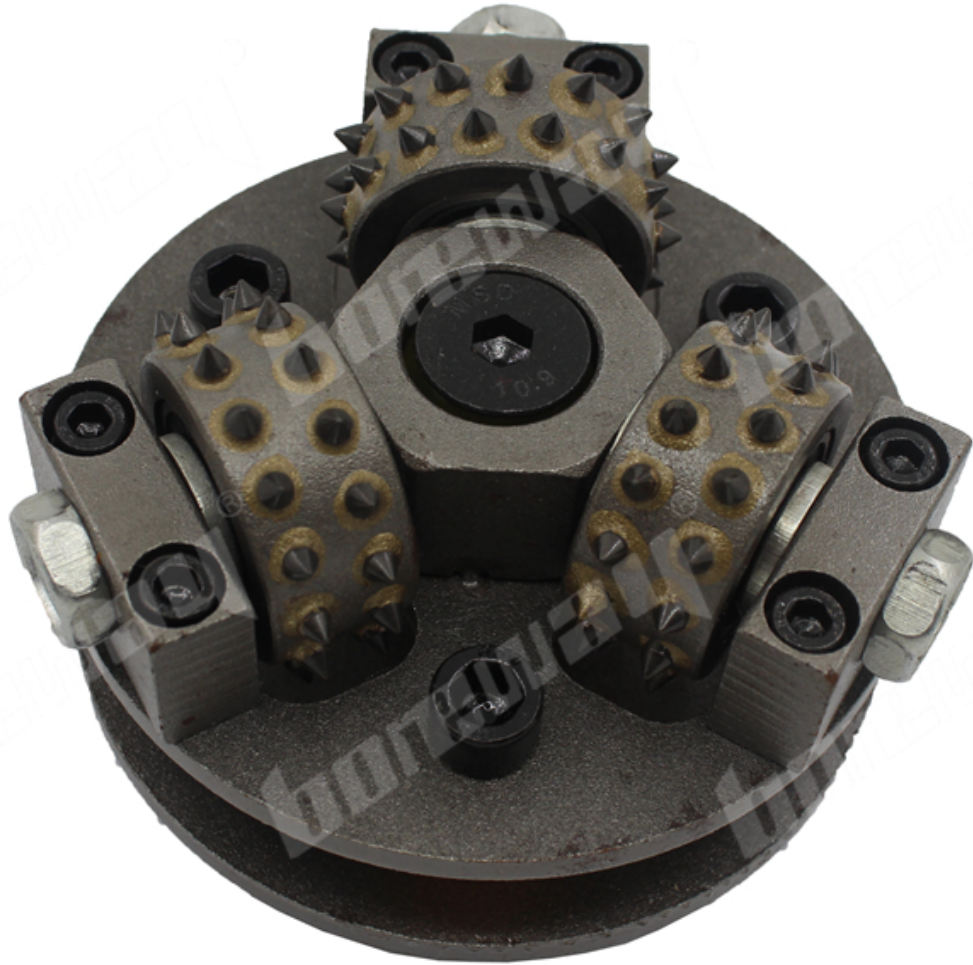
## Specification:

Product name	Outer Diameter		Roller quantity	Segment quantity	Connection
	Inch	mm			
Bush hammer tools	5	125	3	30	M14 M16 5/8"-11 42mm 50mm
			4	45	
	6	150	3	30	
			6	45	
	8	200	4	30	
			8	45	
	10	250	5	30	
			10	45	
	12	300	10	45	
			6	30	

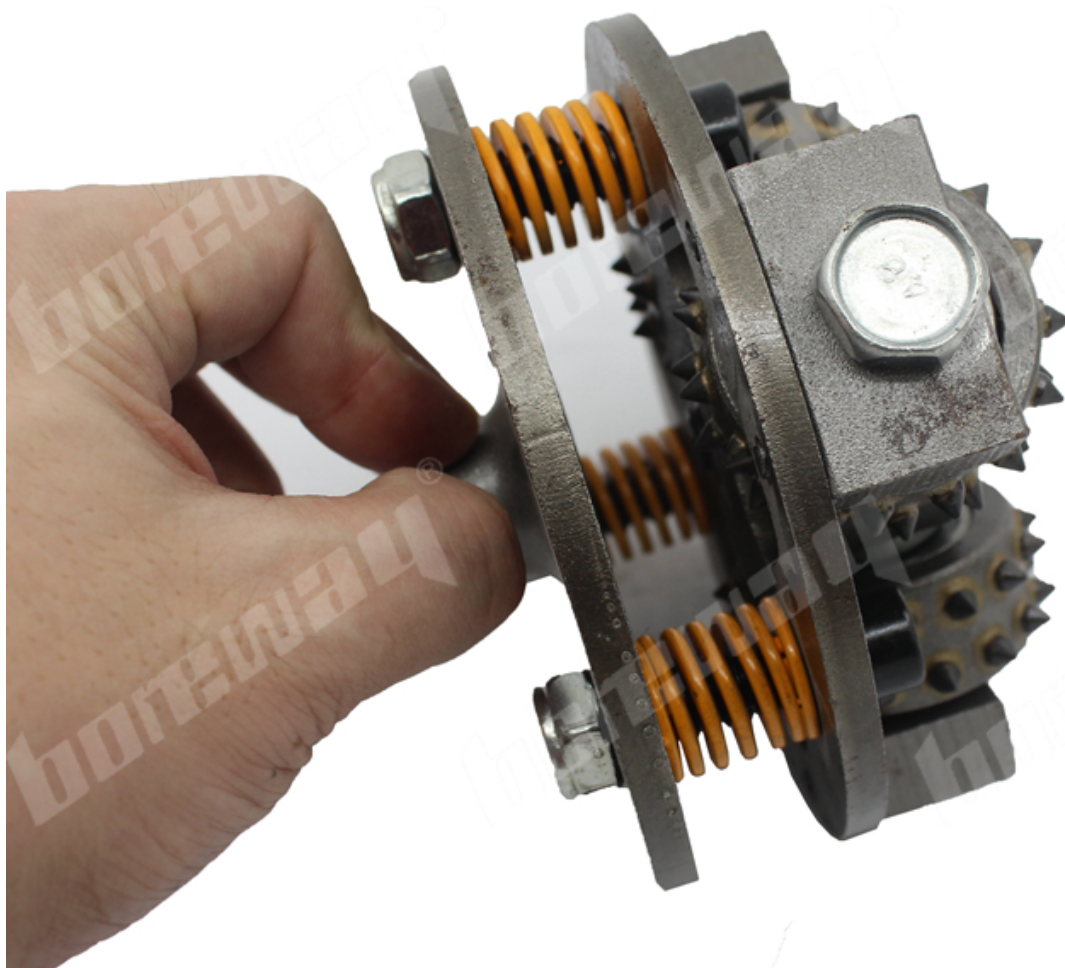
Other connection and specification can be customized according to need.

## Images:

**boreway**®



# **boreway**<sup>®</sup>



If you want know more images, please contact us.

## **Related products:**

D270x6Tx45s Diamond Bush Hammer Finish For HTC Floor Grinding Machine



## **Contact us:**

Fujian Nanan **boreway**<sup>®</sup> Machinery Co.,Ltd.



No.605 Huahui Center, Shuitou Town 362342 Quanzhou, Fujian, China

 **TEL:** (+86)595-86990206 /  **Fax:** (+86)595-86990220

 **Mobile/WhatsApp/Wechat:** (+ 86) 18650679939

 **E-mail:** [boreway@boreway.com](mailto:boreway@boreway.com)

 **Lyon Chang**