

Introduction:

Manual Rack High Frequency Induction Weld Machine. It is a new type of high-frequency welding auxiliary equipment for diamond saw blades. It can automatically complete high-frequency heating, rapid cooling, tool holder and other operations. The machine is composed of high precision parts such as air claw, knife head adjusting and so on. Therefore, the welding precision and efficiency are greatly improved, and the welding strength of the joint and the steel body is guaranteed.

Feature:

1. Welding diameter range can be adjusted
2. Welding frame structure is compact and reliable
3. High level of automation, good stability, long service life

Specification:

Specification of Manual Rack High Frequency Induction Machine Weld Diamond Segment Blade

Model No: BWM-HJ165	
Welding Range	Φ240mm - 2300mm(standard Φ1300mm)
Verticality	≤± 0.3mm
Parallelism	≤± 0.3mm
Welding Rate	4-20 PCS/Min
Air Pressure	0.3 - 0.6Mpa
Water Pressure	≥ 0.2Mpa
Voltage	220V (Single-phase)50Hz
Power(From LED Light)	370W
Water Consumption	1.5 - 2m ³ /h
Machine Dimensions	L1030*W550*H1840mm
Equipment Weight	160Kg
Package Dimensions	L2000*W680*H700(Horizontally)
Package Weight(Wooden Package)	200Kg

Noted: This of welding frame is not equipped with high frequency machine, air compressor, water pump, if necessary, can be another random frame configuration.

Picture:

Manual Rack High Frequency Induction Machine Weld Diamond Segment Blade

boreway®



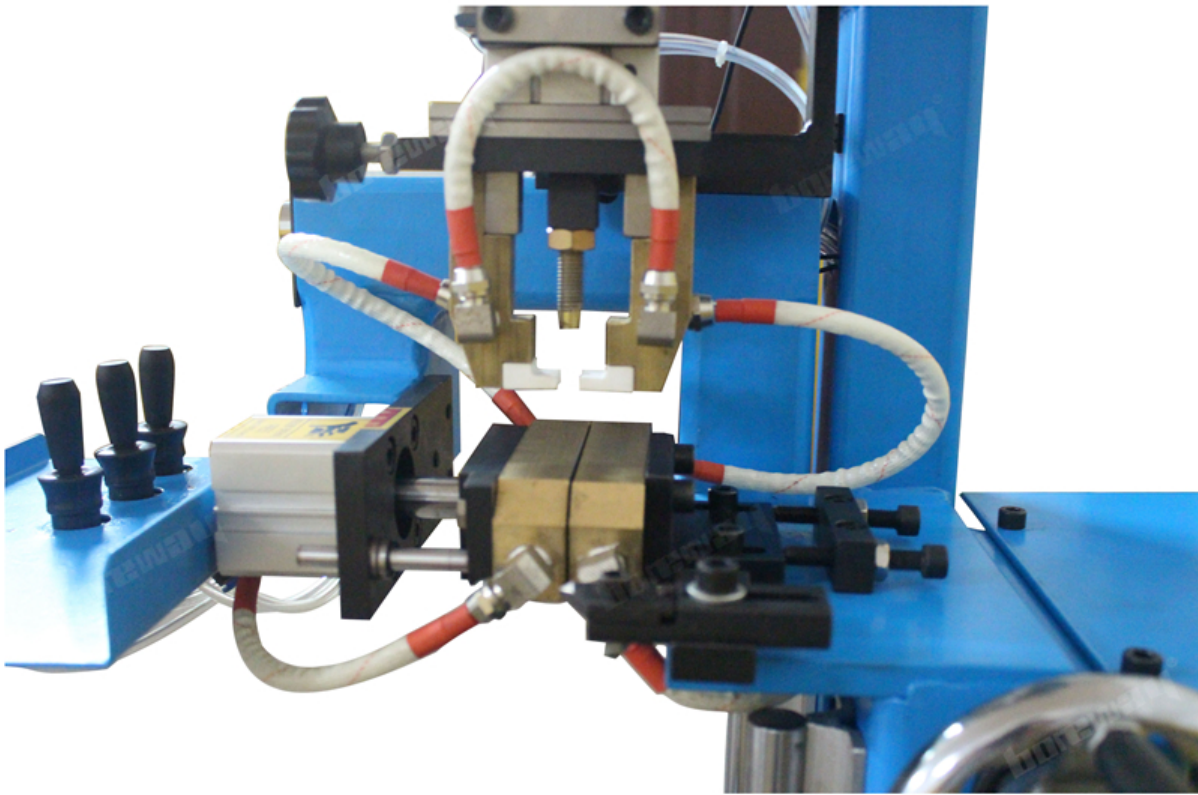
Boreway Machinery Co., Ltd.
www.diamondtools.top
www.boreway.com

boreway®



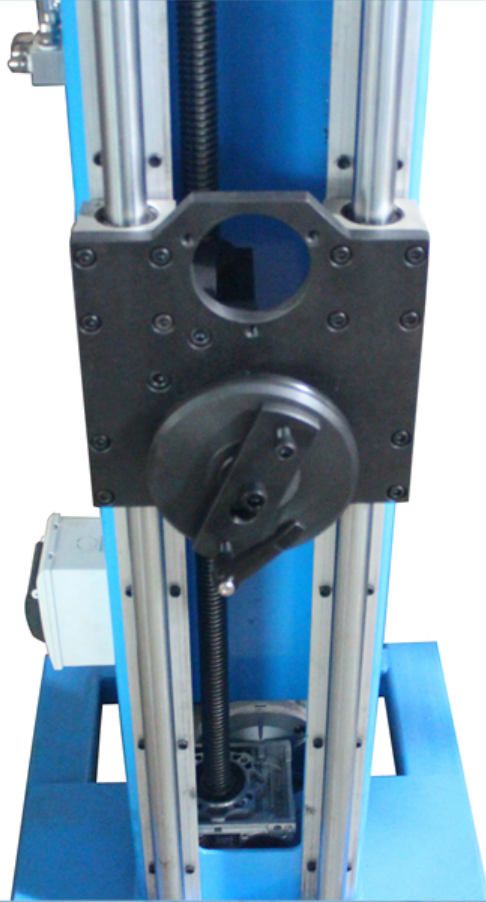
Boreway Machinery Co., Ltd.
www.diamondtools.top
www.boreway.com

boreway®



Boreway Machinery Co., Ltd.
www.diamondtools.top
www.boreway.com

boreway®



Boreway Machinery Co., Ltd.
www.diamondtools.top
www.boreway.com

Contact us:

Fujian Nanan Boreway Machinery Co.,Ltd.

Address: Shuitou Town,Quanzhou, Fujian, China

Post Code: 362342

TEL: (+86)595-86990206

FAX: (+86)595-86990220

WhatsApp:+86-18650679939

Email:boreway02@boreway.net