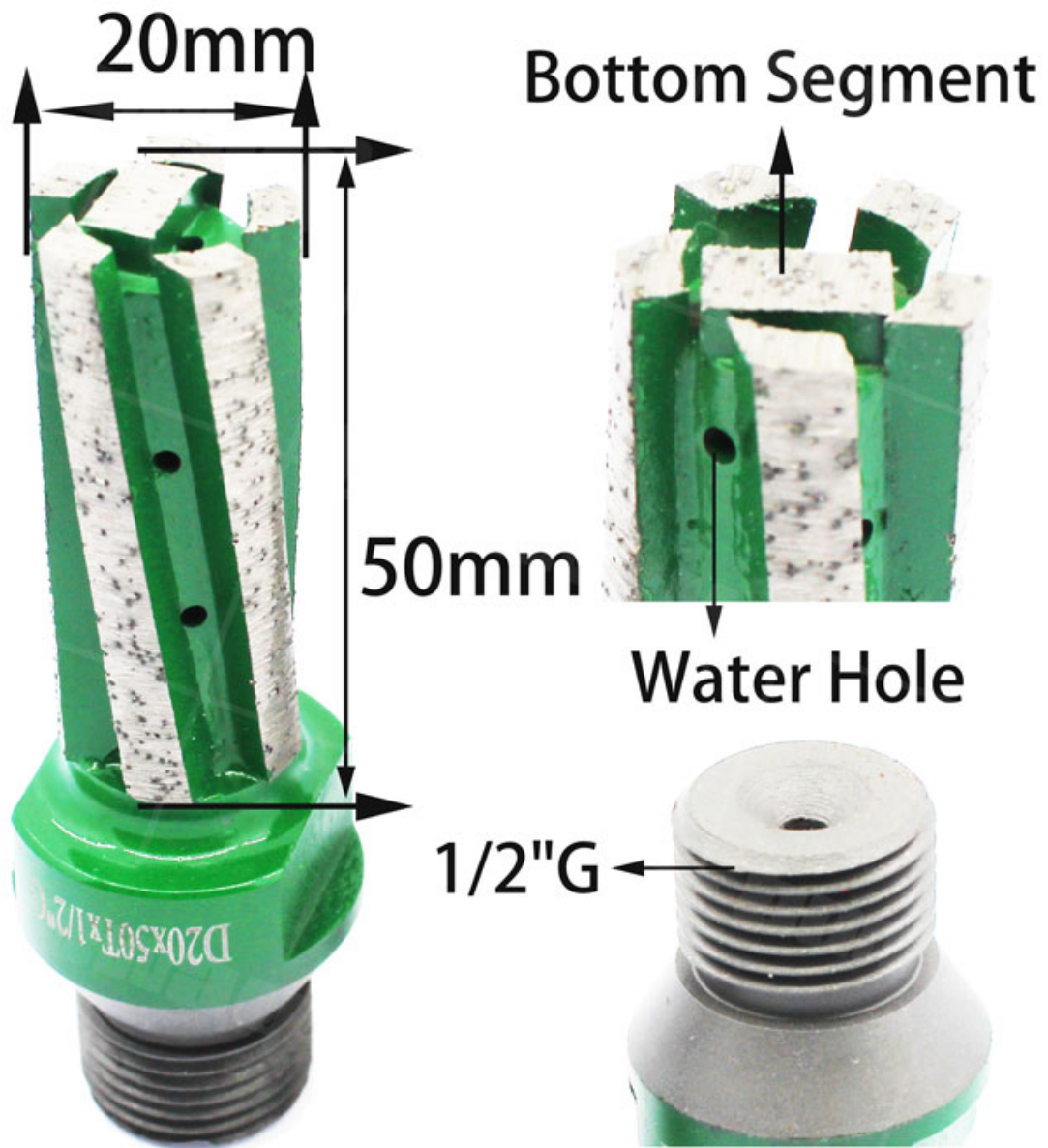


D20 CNC

- 1. Works Weat.
- 2.
- 3.
- 4. 50mm
- 5. 20mm
- 6. Thread 1/2 CNC
- 7.

- 1. **D20 CNC**
- 2. CNC
- 4.



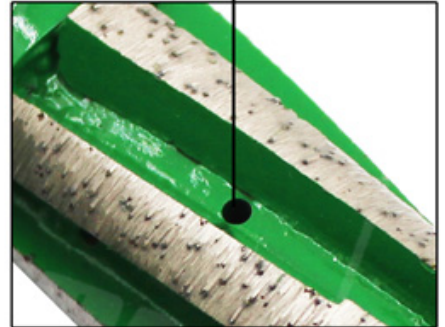
With Strengthened Bottom



Segment

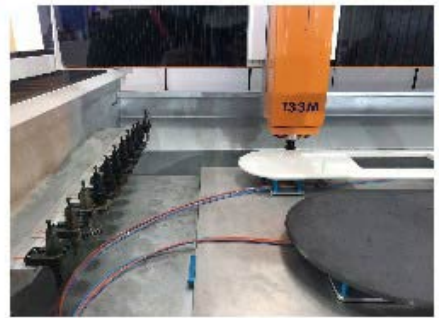
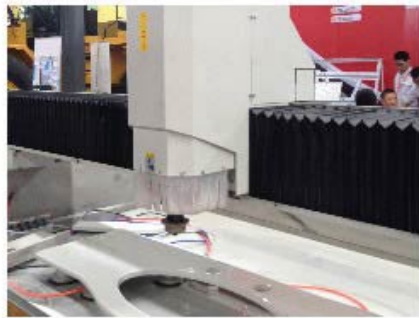


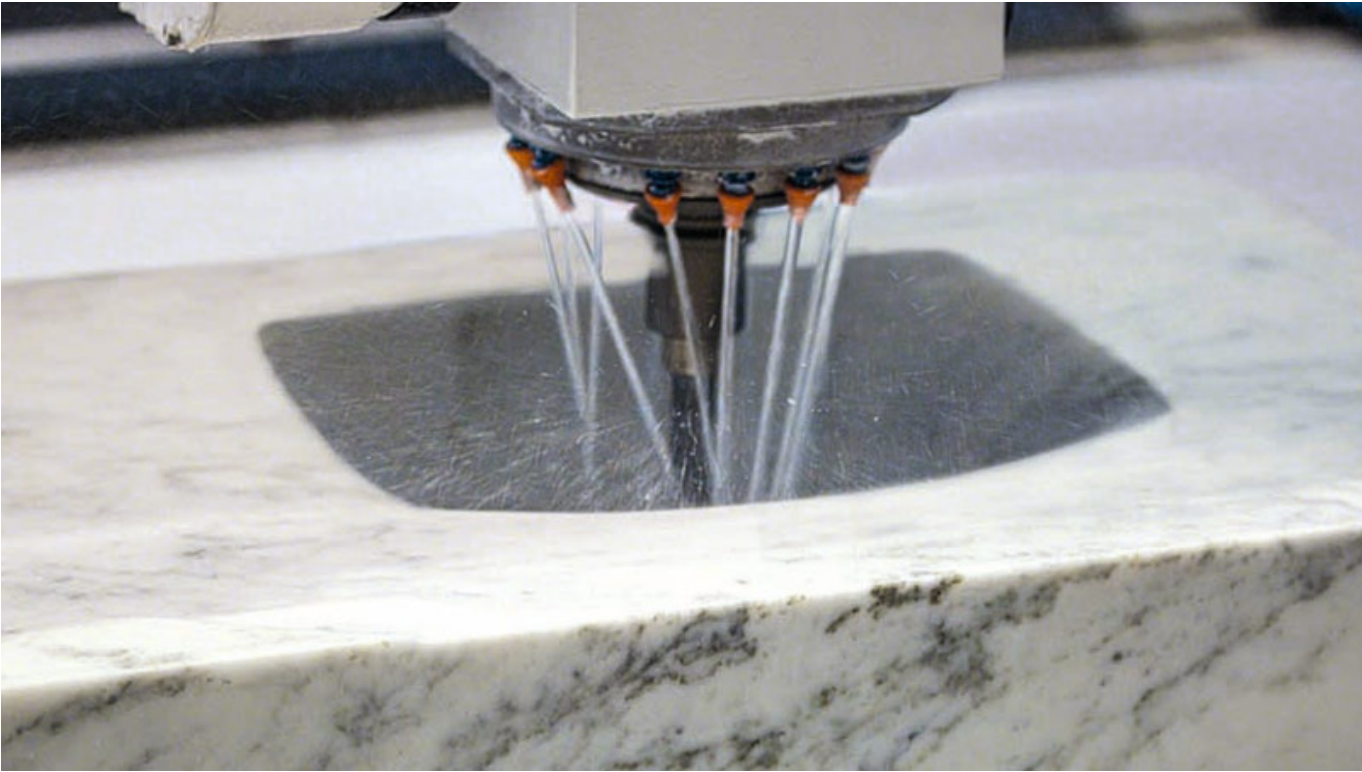
Water Hole



Boreway Machinery Co.,Ltd
www.diamondtools.top
www.boreway.net

□□CNC□□□□□□□□□□□□□□□□





boreway®



Boreway Machinery Co.,Ltd
www.diamondtools.top
www.boreway.net



 **Tel** ☐ +86☐595-86990206 /  ☐☐☐☐☐☐+86☐595-86990220

 ☐☐☐☐/ **WhatsApp** / **WECHAT**☐☐+ 86☐ 18650679939

 **E**☐☐☐☐ **boreway@boreway.com**

 **Lyon Chang**