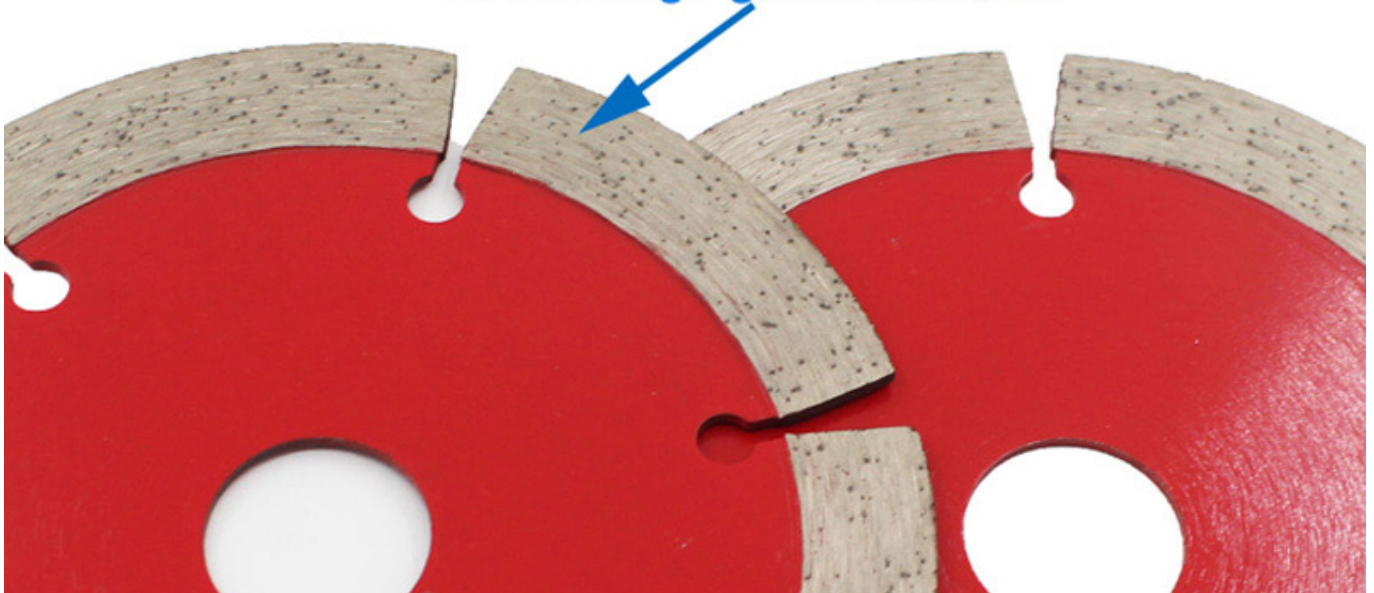


180mm 鋼 鋼絲繩 鋼絲繩 鋼絲 鋼 鋼 鋼絲 鋼絲繩
鋼絲 鋼 鋼絲繩 鋼 鋼 鋼

鋼絲:

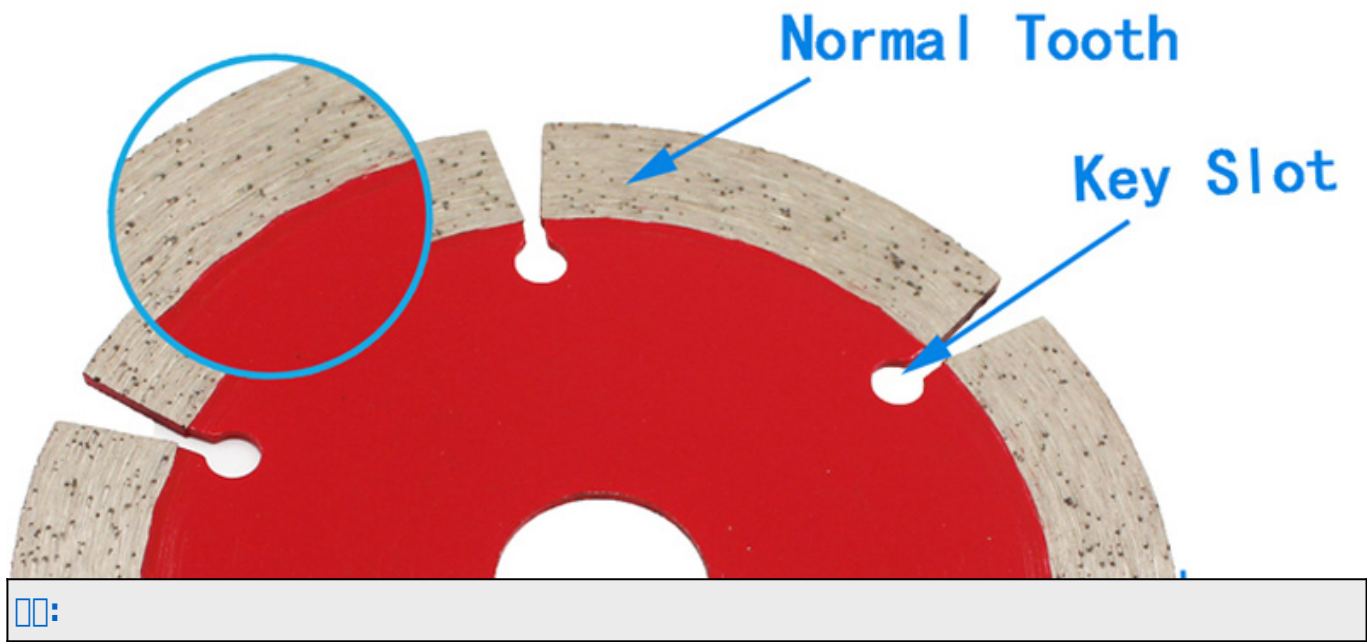
1. 鋼絲繩 鋼絲繩 鋼絲 鋼, 鋼, 鋼 鋼 鋼
2. 鋼 鋼 鋼 鋼, 鋼絲 鋼絲繩 鋼
3. **180mm** 鋼 鋼絲繩 鋼 鋼 鋼 鋼 鋼 鋼 鋼 鋼 鋼 鋼 鋼, 鋼 鋼絲繩
4. 鋼絲繩, 鋼 鋼

1. Use good quality bonding agent
2. Use High grade diamond



鋼 鋼 鋼:

180mm 鋼 鋼絲繩 鋼 鋼



180mm

mm	mm / inch	mm	PCS	mm	mm	mm	mm
4.3	110	32.3	6/8/9	8/10/12	4	105	35
4.5	115	38.5	8	8/10/12			6/8
5	125	37.5	9	8/10/12			8/10/12
6	150	33.5	12	8/10/12			
7	180	35	14	8/10/12			
8	200	39.2	14	8/10/12			
9	230	34.4	18	8/10/12			

Our factory use original high grade diamond



pk

Other factory mix second diamond selected from waste segment

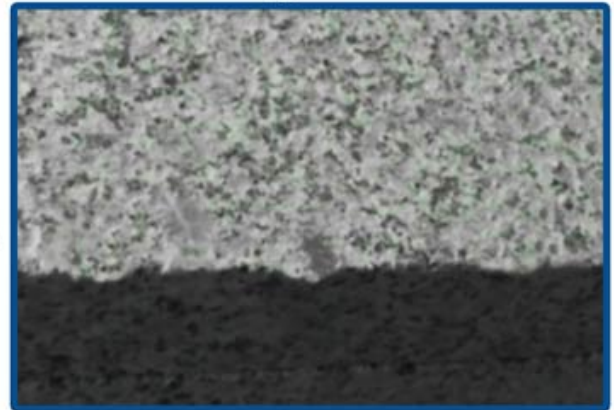


Our blade cutting effect



pk

Other supplier blade cutting effect



□□□□ □□ :

1. □□□ □□□□ □□ □□□ □□□ □□ □ □□ □□□□□□□□.
 □□□ □□□ □ □□□ □□□ □□□□□□□□
 □□ □□□ □□□□ □□ □□□ □□ □ □□□□ □□□□□□□□.

2. □□□ □□ □□ □ □□□ □□□□ □□□□.

3. □□□ □□□□ □□ □□, □□ □□ □ □□□, □□ □□□ □□□□□□□□, □□□ □□ □□□□ □□□, □□□ □□ □□□□□□□□.

4. □□ □□□□ □□ □□□ □□□□□□□□.

□□:

180mm □□ □□□□ □□ □□

1. □□□ 65□ □□ □□ □□□ □□□□, □□□ □□ □□ □□, □□□□, □□□□ □□□□ □□□□□□□□;

2. 請將樣品規格書或圖紙寄給廠商，以便廠商進行樣品加工；
3. 請將樣品規格書或圖紙寄給廠商，以便廠商進行樣品加工，並請將樣品、規格書、圖紙等寄給廠商。
4. 請將樣品規格書或圖紙寄給廠商，以便廠商進行樣品加工，並請將樣品、規格書、圖紙等寄給廠商。
5. 請將樣品規格書或圖紙寄給廠商，以便廠商進行樣品加工，並請將樣品、規格書、圖紙等寄給廠商。請將樣品規格書或圖紙寄給廠商，以便廠商進行樣品加工。

請將樣品規格書或圖紙寄給廠商，以便廠商進行樣品加工 = OEM

Support Sample Processing Customization

Style and Specifications



Contact Salesman

Due to the large number of product specifications and styles, in order to avoid conflicts, please contact the salesman before placing the order.

1

Provide Samples

The manufacturer supports the sample processing and customization, and the buyer provides the sample first to communicate the production requirements.



2



Mail Samples

According to the buyer's demand for proofing, the manufacturer needs the buyer to pay the proofing fee first, and the sample fee will be returned after the order is concluded.

3

Generate Order

The buyer receives the sample. If satisfied, place an order for batch production. After confirming the receipt, contact the salesman to return the proofing cost.



4

請將樣品規格書或圖紙寄給廠商，以便廠商進行樣品加工 :

180mm 請將樣品規格書或圖紙寄給廠商，以便廠商進行樣品加工，並請將樣品、規格書、圖紙等寄給廠商。

□□ □□, □□ □□ □□ □□!



Porcelain tile



Ceramic



Engineered stone

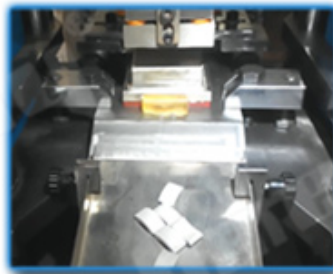
□□ □□ :

180mm □□ □□□□ □□ □□ □□□□ ...□ □□ □□ □□□□, □□ □, □□ □, □□□ □





● Cold Press Mschine



● Fill The Mold



● The Product Polishing



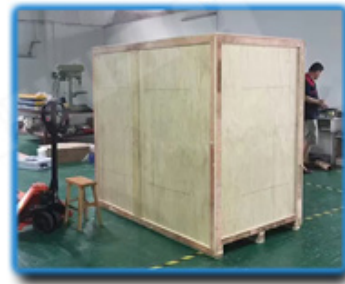
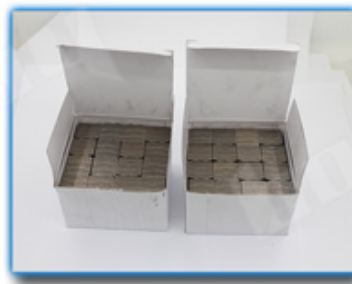
● Hot Press Machinery



● Remove The Mold



● Packing



□□ □□ :



Boweng Machinery Co., Ltd
www.diamondtools.top
www.boweng.com

5 □□ □□□□ □□



Boweng Machinery Co., Ltd
www.diamondtools.top
www.boweng.com

□□ □□ □□□□ □□ □□

□□ □□ :





□□ □ □ □ :

□□:

1. □□ □□ □□ □□

□□ □□□□ 2.By □□ / □□, □□ / □□ □□

3. 45 □□□□, □□□□ □□ □□□□ (□)

4. □□□ □□ □ □□ □□ □□□□ □□□□.

☎ :

歡迎各界人士垂詢。如有需要，請洽。竭誠為您服務。竭誠為您服務。竭誠為您服務。

☎☎☎☎:

Fujian Nanan **boreway** Machinery Co.,Ltd.



No.605 Huahui Center, Shuitou Town 362342 Quanzhou, 中國



☎ : (+86) 595-86990206 /  ☎: (+86) 595-86990220



☎ / **WhatsApp** / **Wechat** : (+ 86) 18650679939



☎☎☎: **boreway@boreway.com**



☎ ☎